

The Arrowhead: Emblem of the National Park Service

Have you ever wondered about that arrowhead you see on signs around Sleeping Bear Dunes National Lakeshore?

That's the *emblem* of the National Park Service.



The Arrowhead: Emblem of the National Park Service



Each part of the emblem symbolizes something the National Park Service was created to protect.

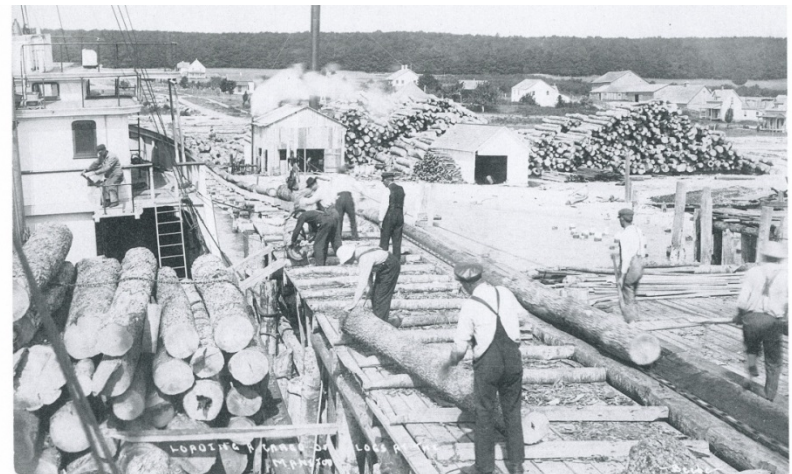
The Arrowhead: Emblem of the National Park Service



The arrowhead shape represents human culture.

The Arrowhead: Emblem of the National Park Service

CULTURE: The Sleeping Bear Dunes area used to be home to the Ottawa and Chippewa tribes, then logging operations, farming, and a U.S. Life-saving station.



Empire Lumber Co. operations - Loading Logs on Edmond Buckley East Side 1916



The Arrowhead: Emblem of the National Park Service



The sequoia tree represents all trees and other plants.

The Arrowhead: Emblem of the National Park Service

PLANTS: The Lakeshore is home to special plants such as the threatened Pitcher's Thistle and ancient cedar trees.



The Arrowhead: Emblem of the National Park Service



The mountain represents land formations, scenery, and recreational opportunities.

The Arrowhead: Emblem of the National Park Service

LANDFORMS: The Lakeshore protects the dunes and bluffs for everyone to enjoy.



The Arrowhead: Emblem of the National Park Service



The bison represents all wildlife.

The Arrowhead: Emblem of the National Park Service

Sleeping Bear Dunes is home to many species of animals, including the endangered piping plover, beaver, red fox, and Caspian Tern.



The Arrowhead: Emblem of the National Park Service



The lake represents clean water and recreational opportunities.

The Arrowhead: Emblem of the National Park Service

Sleeping Bear Dunes National Lakeshore has beautiful rivers for kayaking and Lake Michigan beaches for swimming.



The Arrowhead: Emblem of the National Park Service



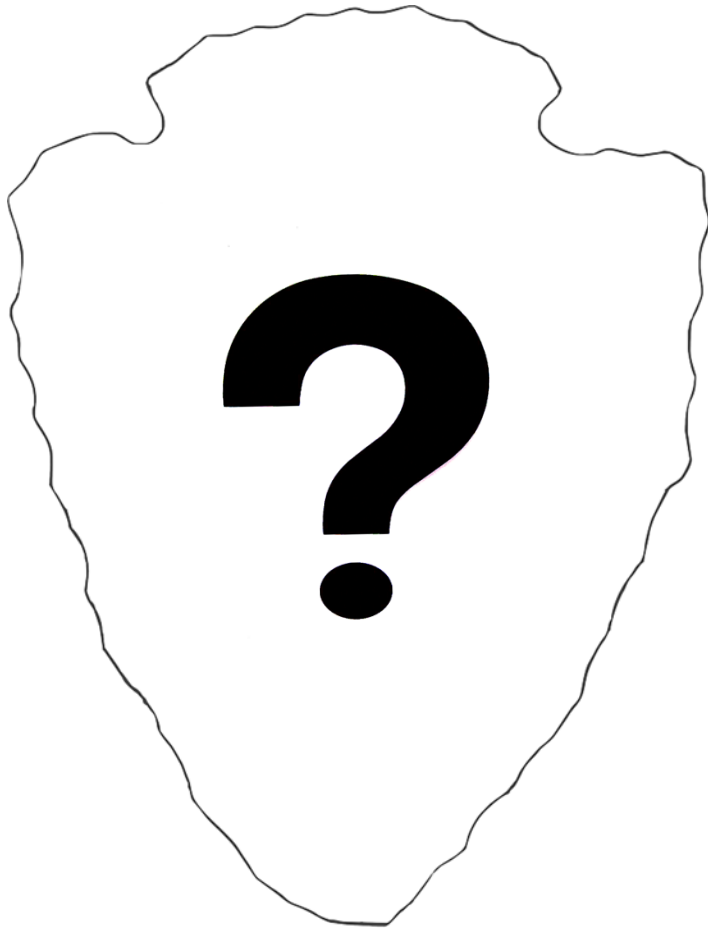
The National Park Service was founded in 1916 to protect and preserve all these things for the enjoyment of everyone.

The Arrowhead: Emblem of the National Park Service

Sleeping Bear Dunes National Lakeshore was officially dedicated in 1970.



The Arrowhead: Emblem of the National Park Service



POP QUIZ!

Can you list all the symbols on the National Park Service emblem and tell what each one represents?